

Clinical Innovation

Digital orthodontic indirect bonding systems: A new wave

Nasib Balut¹, Digant P. Thakkar², Enrique Gonzalez³, Rodrigo Eluani⁴, Luis David Silva⁴

¹Universidad de Baja California, Mexicali, Mexico, ²Silver Smile Orthodontics, Digant's 3D Orthodontics, Rajkot, Gujarat, India, ³Universidad Tecnológica de Mexico, ⁴Clinica Balut, Mexico.



Nasib Balut (First author)

***Corresponding author:**

Digant P. Thakkar,
Silver Smile Orthodontics,
Digant's 3D Orthodontics,
Rajkot, Gujarat, India.

digantorthodontist@gmail.com

Received : 15 February 2020

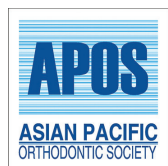
Accepted : 25 May 2020

Published : 18 September 2020

DOI

10.25259/APOS_18_2020

Quick Response Code:



ABSTRACT

Digital technologies are progressing with leaps and bounds and the field of orthodontics is not untouched by it, with innovations like intraoral scanners and 3D printers being easy to own and maintain and increased availability of biocompatible 3D printing materials orthodontist are curious to use this technology to improve orthodontic bracket positioning which would require minimal to no repositioning during the course of treatment. The authors here have tried to outline 2 different methods using CBCT and VTO as guide to decide the bracket positioning digitally and using 3D printed Indirect Bonding trays for orthodontic bonding.

Keywords: Digital orthodontics, Indirect bonding, Digital indirect bonding, 3D printing, Indirect bonding trays

Indirect bonding has been a well-established system for many years. Introduced by Silverman *et al.*,^[1] it is a method that uses transfer trays made of compressed plastic to transfer the brackets placed on plaster models. IDS 2019 showed a significant surge in intraoral scanning and 3D printing technology, making it more accurate, efficiently, and widely available. Newer 3D printing materials were developed with dentistry, and especially orthodontics in mind, with emphasis on in-office 3D scanning and printing. Indirect bonding has many advantages, such as patient comfort, natural reproduction of bracket positioning, overcorrection, control of in and out movements of the teeth, and reduced treatment duration.^[2]

This technique has been available for many years, but very few orthodontists use it, mainly because the laboratory and chairside procedures are lengthy and overly complicated, considering the manual fabrication of indirect bonding trays. With the amalgamation of digital technologies such as intraoral scanning and 3D printing in orthodontic laboratory workflow, one must explore the opportunities and ease these technologies bring to the indirect bonding technique.^[3] The rising popularity of intraoral scanning has opened up new avenues for planning, designing, and executing orthodontic treatment for our patients.

The indirect bonding system was developed as a manual laboratory process.^[4] It has been reported that a silicon-based tray has better precision compared to a thermoform tray.^[5] At present, indirect bonding uses computer-aided design and computer-aided manufacturing (CAD/CAM). The CAD/CAM programs design a virtual model to produce a bracket transfer jig, and the CAD/CAM bracket transfer jig facilitates bonding of the bracket to the target tooth.^[6-8] For instance, three-

This is an open-access article distributed under the terms of the Creative Commons Attribution-Non Commercial-Share Alike 4.0 License, which allows others to remix, tweak, and build upon the work non-commercially, as long as the author is credited and the new creations are licensed under the identical terms.

©2019 Published by Scientific Scholar on behalf of APOS Trends in Orthodontics

dimensional (3D) modeling of the maxilla and mandible can be used for the ideal setup and 3D printing of bracket transfer jigs. These would, subsequently, be involved in transferring brackets with individualized bracket positioning based on virtual treatment objective, custom resin bases, and proper arch forms by giving a complete picture of the treatment's progress. Arch forms simplify chairside wire bending, custom resin bases simplify the requirement of the third order bends, and bracket transfer jigs help to position the brackets as per the digital planning accurately. Koo *et al.*^[9] found that, on average, IDB was more accurate regarding bracket height, with no significant difference between IDB and direct bonding for angulation and mesiodistal position.

This article details the recent advances in digital indirect bonding using the Ortho-Analyzer software 3Shape and Onyx Ceph Software Image Instruments, which includes digital planning, different tray designs, and in-house 3D printing, making it easy to incorporate in daily orthodontic practice.

CASE REPORT

Before the virtual placement of the brackets, the possibility of splicing DICOM/STL allows us you know and locate the exact

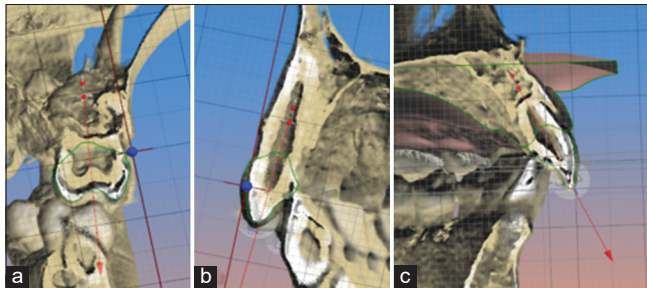


Figure 1: (a) Location of the coronal-root axis, first upper molar, (b) position of the coronal-root axis, upper cuspid, (c) location of the coronal-root axis, upper central incisor.

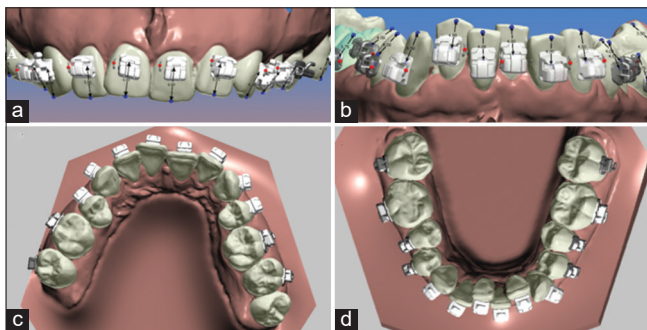


Figure 2: (a) Position of the brackets in the model, upper incisors frontal view, (b) position of the brackets, lower incisors frontal view, (c) occlusal view of the brackets, position in the upper arch, (d) occlusal view of the brackets, position in the lower arch using the Ortho-Analyzer Software.

axis of the roots and crowns, which has a direct effect on the expression of the prescription of the chosen system [Figure 1].

Once the axial axes of the teeth and their own roots have been located, we proceed to place the virtual brackets [Figure 2]. It is important to emphasize that digital bonding can be done using any type of bracket, which allows any orthodontist to apply it in their office, regardless of the prescription of their choice.

In this particular case, we use the bracket placement strategy proposed by doctors Nasib Balud and David Sarver.^[10]

The position of the brackets is again evaluated on the tomography to make sure that the location coincides with the coronal-root axis [Figure 3].

The next step is to evaluate the splicing between the scan tomography, tubes, and brackets with the length of the axis of the tooth. These tools will help us assess the torque that will be applied to each tooth [Figure 4].

Once the position of the brackets meets the objectives of our treatment plan after reviewing it in detail, we prepare the model for the subsequent design of the guide. Such preparation consists of virtually eliminating the retention areas [Figure 5].

Once the retentions are released, we will design the trays considering enough height to support brackets and tubes but being careful not to wrap them too much not to generate

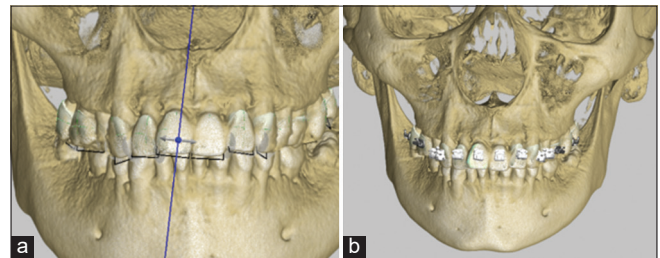


Figure 3: (a) Location of axes in tomography, long axis of the tooth, (b) location of the brackets in tomography positioned with the long axis of the tooth.

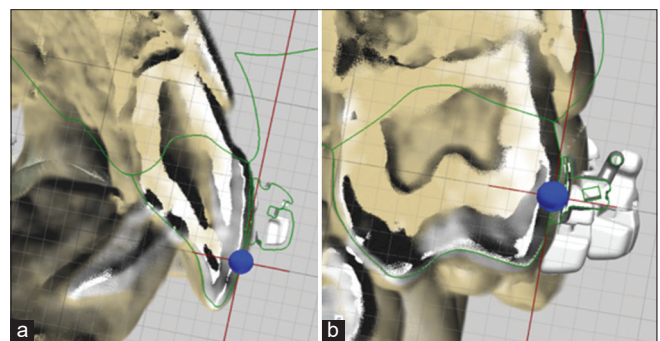


Figure 4: (a) Splicing of the scan and tomography with the bracket for axe assessment, (b) splicing of the scan and tomography with a tube for axe evaluation.

mechanical retention. To facilitate the removal of the guide after cementing the brackets, it is important not to include the hooks inside the guide and cover two-thirds of the bracket [Figure 6].

The step after design is important to evaluate the precision of the guide in the model, which will help avoid errors when taking it to the patient's mouth [Figure 7].

Once we evaluate the accuracy of the guard, it will be ready to be printed using a sufficiently flexible material so that it is not so retentive and can be easily removed after placing it. In this case, we used a printed acrylic resin the Digital Light Processing system [Figure 8].

Next, we place the selected brackets using the software and verify they fit perfectly in our guide design [Figure 9].

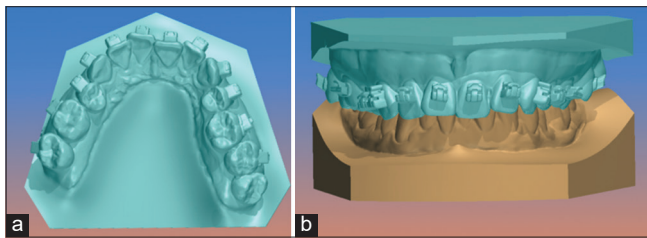


Figure 5: (a) Upper model occlusal view, where we observe the virtual filling of retention areas such as bracket tubes and fins, (b) frontal view of the upper model with the lower arch.

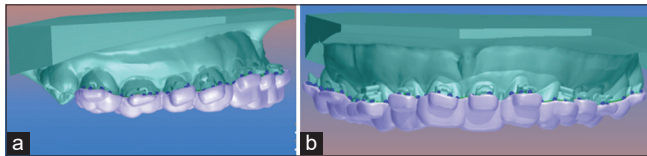


Figure 6: (a) Guide design mounted on the upper model, lateral view, (b) guide design mounted on the upper model, frontal view.

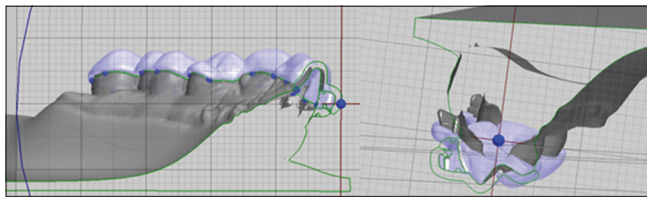


Figure 7: Sagittal section of the scan including the virtual model, the brackets, and digital tube. Here, we are able the thickness and precision of the guide.

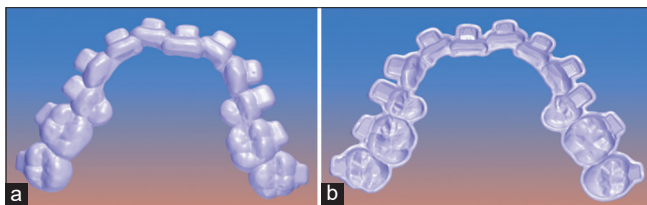


Figure 8: (a) Digital upper guide finished, occlusal view, (b) digital upper guide finished, inside view.

If it is convenient for the case, the cemented guides can be digitally fragmented, which is very useful in cases of severe crowding [Figure 10].

The next step is the physical impression of the guides and places the brackets in the patient's mouth [Figure 11].

As mentioned earlier, it was decided to segment the guide into three parts due to crowding in the lower arch [Figure 12].

Once all brackets have been placed and cured for 20 s each, the guide is removed. We must be careful to not remove any brackets in this step [Figure 13].

SECOND METHOD CASE REPORT

After intraoral scanning, the scans are cleaned and digital base are constructed [Figure 14].

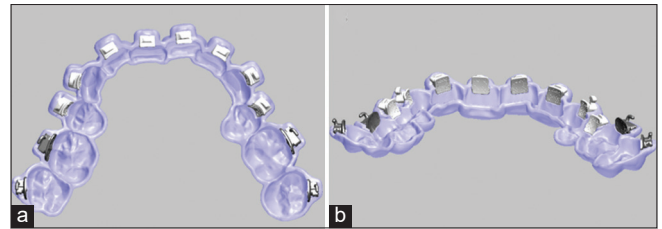


Figure 9: (a) Digital upper guide with virtual brackets, inside view, (b) digital upper guide with virtual brackets, posteroanterior view.

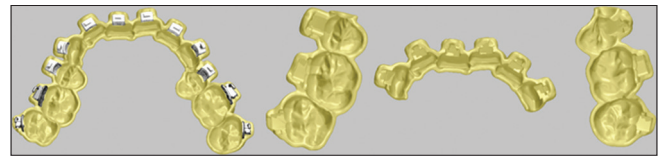


Figure 10: Digital upper guide segmented into three parts.



Figure 11: Placement of brackets with complete upper guide.

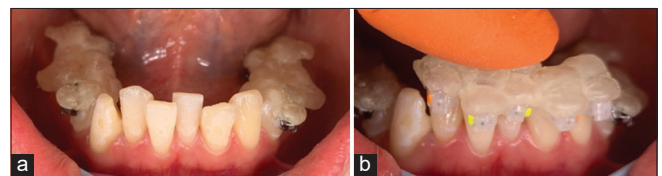


Figure 12: (a) Placement of brackets with the segmented lower guide in molars and bicuspids, (b) placement of brackets with the segmented lower guide in cuspid and incisors.



Figure 13: Tray removed by teasing out with hemostat along gingivae above or below brackets and then rolling lingually.

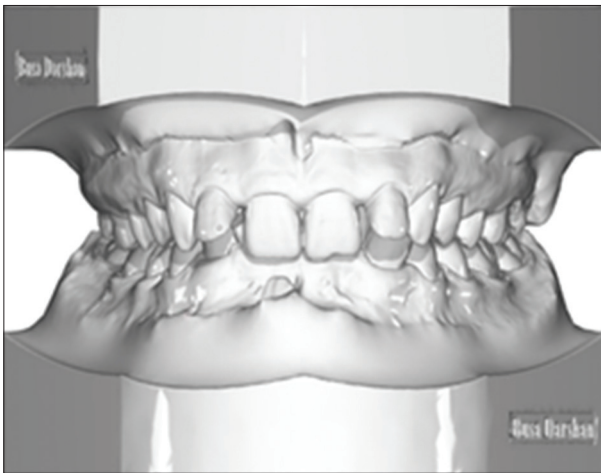


Figure 14: Scan with digital base.



Figure 15: Segmentation of individual tooth.

Individual tooth is digitally separated/segmented [Figure 15] and based on diagnosis by an orthodontists expertise using cephalometry and photographs as required a digital virtual tooth movements are constructed [Figure 16].

Based on the final tooth positioning brackets are positioned on individual teeth in a straight line, conceptualizing a true straight wire appliance [Figure 17].

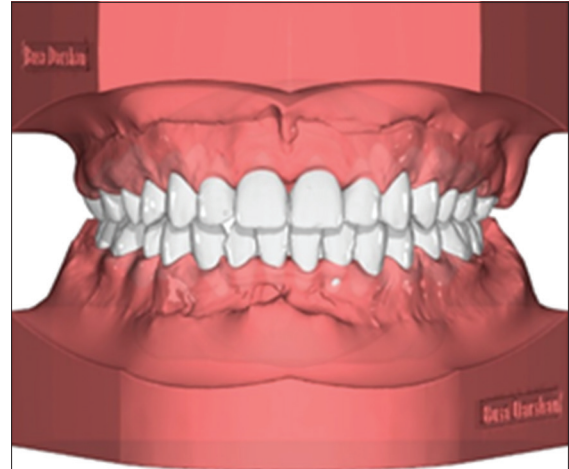


Figure 16: Virtual treatment setup.

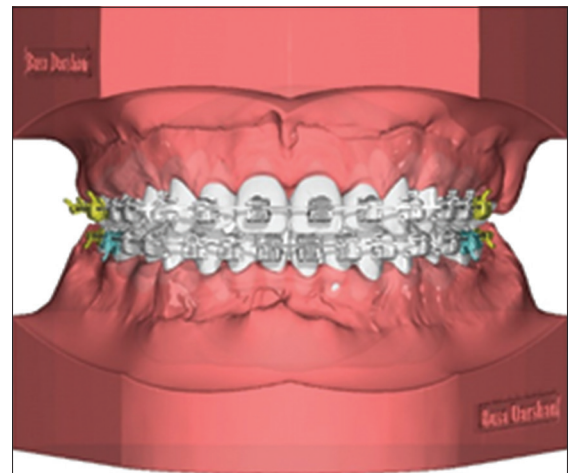


Figure 17: Individual bracket positioning by straight wire concept.

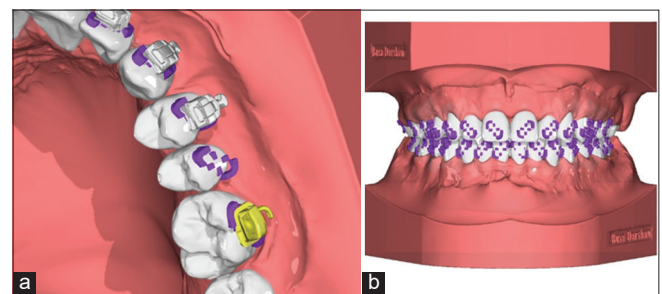


Figure 18: Torque compensation on individual bracket by digitally constructed base, (a) closeup view with and without brackets, (b) bracket support model ready for printing.

This bracket positioning compensates individual torque for each teeth which can be observed as distance between tooth and brackets, a torque compensation model is created to support these bracket distances which is used to make a composite base before bonding using 3D printed bonding trays [Figure 18a and b] these models are printed

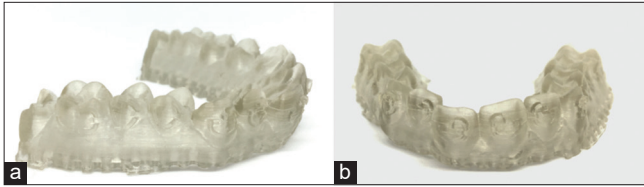


Figure 19: Torque compensation models printed from fig 18, (a) lateral view, (b) frontal view

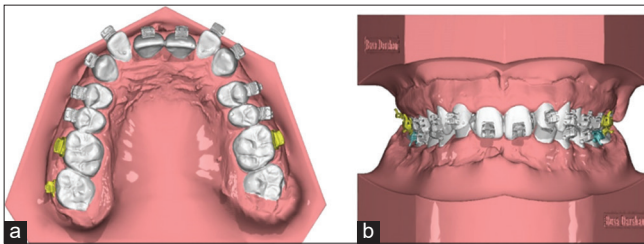


Figure 20: Bracket positioning based on VTO transferred to malocclusion (a) occlusal view, (b) Frontal view.



Figure 21: Orthodontic brackets bonded on Torque compensation.

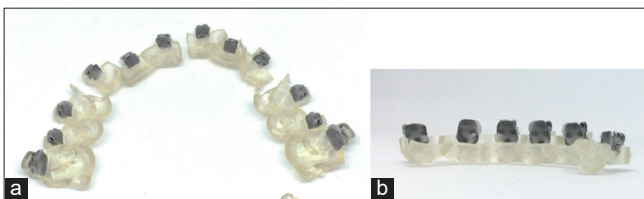


Figure 22: (a and b) Composite base fabricated on bracket bonding surface using 3D printed model from Figure 19, 20.

[Figure 19a and b] using DLP printers with 50 microns accuracy.

The bracket positioning record on VTO model [Figure 17] is transferred to original malocclusion [Figure 20a and b]. Based on these brackets positioning digital indirect bonding

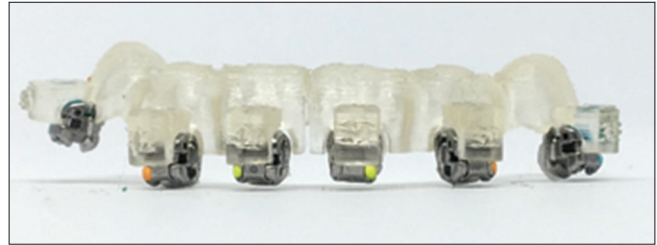


Figure 23: Printed indirect bonding trays segmented in part for bonding.

trays are calculated similar to method 1, the bracket coverage is determined based on the type of 3D printing material used, flexibility of the bonding tray material is inversely proportional to the bracket coverage in the tray, i.e., stiffer the material less is bracket coverage.

Once trays are printed, composite base is made using the 3D printed torque compensation models [Figure 21], these brackets are loaded in the indirect bonding trays. Bonding trays are segmented based on crowing and preferences of an orthodontist [Figure 22] a small segment of indirect bonding tray loaded with brackets can be seen in Figure 23.

CONCLUSION

Digital technology in progressing by leaps and bounds in field of orthodontics. One can use this technology in many different ways with sole purpose being simplifying the road toward quality orthodontic care for the patients. Digital planning with indirect bonding make orthodontist more efficient and accurate in terms of saving chair side time, having clear vision toward treatment progress and improving patient consults.

Declaration of patient consent

Patient's consent not required as patients identity is not disclosed or compromised.

Financial support and sponsorship

Nil.

Conflicts of interest

There are no conflicts of interest.

REFERENCES

1. Silverman E, Cohen M, Gianelly AA, Dietz VS. A universal direct bonding system for both metal and plastic brackets. *Am J Orthod* 1972;62:236-44.
2. Kalange JT. Indirect bonding: A comprehensive review of the advantages. *World J Orthod* 2004;5:301-7.
3. Christensen LR, Cope JB. Digital technology for indirect

- bonding. *Semin Orthodont* 2018;24:451-60.
4. Aksakalli S, Demir A. Indirect bonding: A literature review. *Eur J Gen Dent* 2012;1:6.
 5. Castilla AE, Crowe JJ, Moses JR, Wang M, Ferracane JL, Covell DA Jr. Measurement and comparison of bracket transfer accuracy of Measurement and comparison of bracket transfer accuracy of five indirect bonding techniques. *Angle Orthod* 2014;84:607-14.
 6. Mayhew M. Computer-aided bracket placement for indirect bonding. *Clin Orthod* 2005;39.
 7. Redmond WJ, Redmond MJ, Redmond WR. The OrthoCAD bracket placement solution. *Am J Orthod Dentofacial Orthop* 2004;125:645-6.
 8. Garino F, Garino GB. Computer-aided interactive indirect bonding. *Prog Orthod* 2005;6:214-23.
 9. Koo BC, Chung CH, Vanarsdall RL. Comparison of the accuracy of bracket placement between direct and indirect bonding techniques. *Am J Orthod Dentofacial Orthop* 1999;116:346-51.
 10. Balut N, Sarver D, Popnikolov P. Strategies for bracket placement based on smile esthetics. *Am J Orthod* 2019;53:326-33.

How to cite this article: Balut N, Thakkar DP, Gonzalez E, Eluani R, Silva LD. Digital orthodontic indirect bonding systems: A new wave. *APOS Trends Orthod* 2020;10(3):195-200.